

Contiplex[®] FX

Continuous Peripheral Nerve Block System for Ultrasound Only Applications



19G Ultrasound Visible Catheter with 17G Non Stimulating Tuohy Needle

Who Will Benefit?

The Contiplex® FX system is a simple, cost-effective solution for ultrasound guided Continuous Peripheral Nerve Blocks and is specifically designed for:

1. Providers that no longer utilize a Dual Guidance or Stimulation approach.
2. Blocks that can be performed without the use of stimulation such as TAP or Paravertebral.

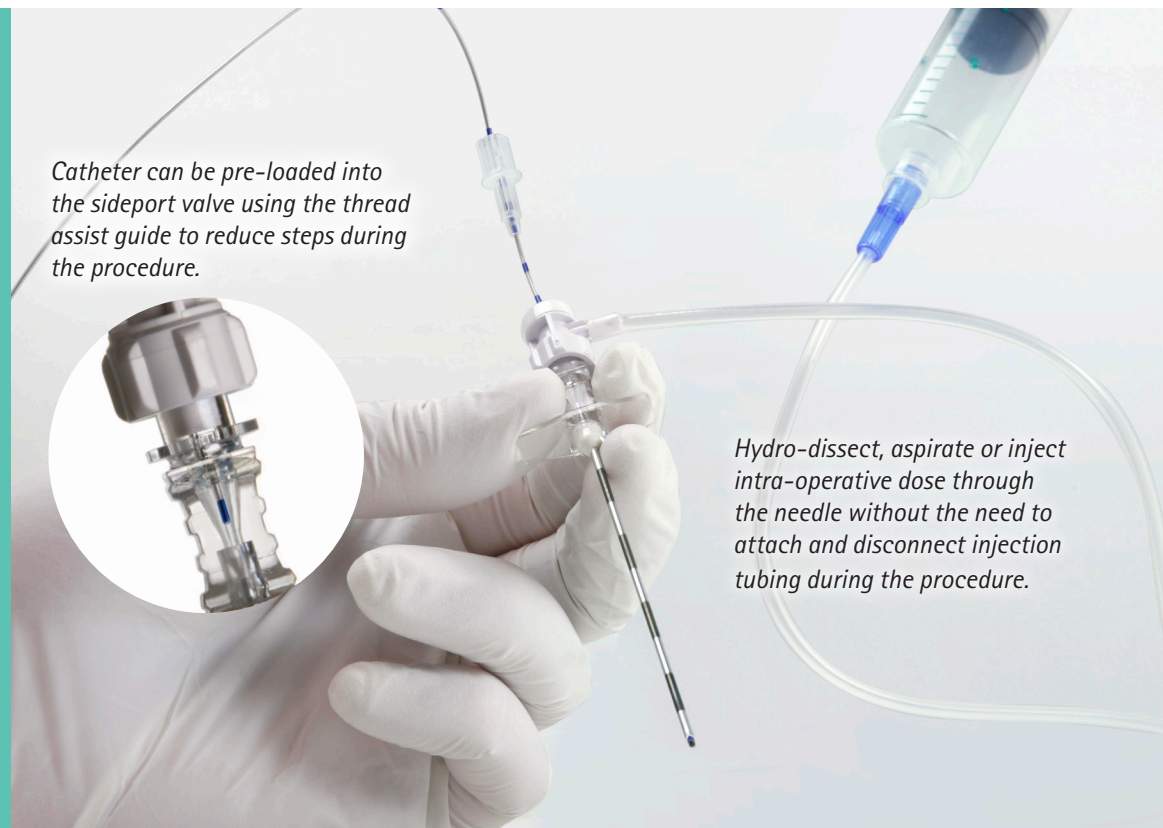
System Design Advantages

1. **Easier placement** – Make ultrasound catheter placement easier with reduced procedural steps.
2. **Optimized catheter design** – Soft tip with more rigid body for easier handling and tip placement.
3. **Improved echogenicity** – Spring coil improves catheter visibility.
4. **Reduced procedural costs** – Contiplex FX may help reduce costs and improve profitability.

1

Easier Placement

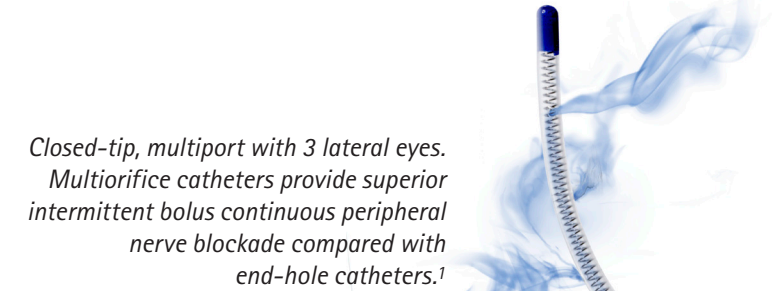
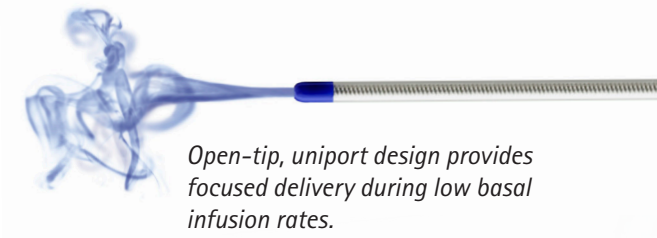
No additional hands to spare? The Contiplex FX features a patented sideport valve designed to help reduce procedural steps and make catheter placement more straightforward during the procedure.



2

Optimized Catheter Design

Contiplex FX is designed with a softer tip to help maintain the catheter in the optimal fascial plane during placement under ultrasound. The catheter body is rigid for easier handling. And it's available in both open and closed tip configuration design, it's your choice.



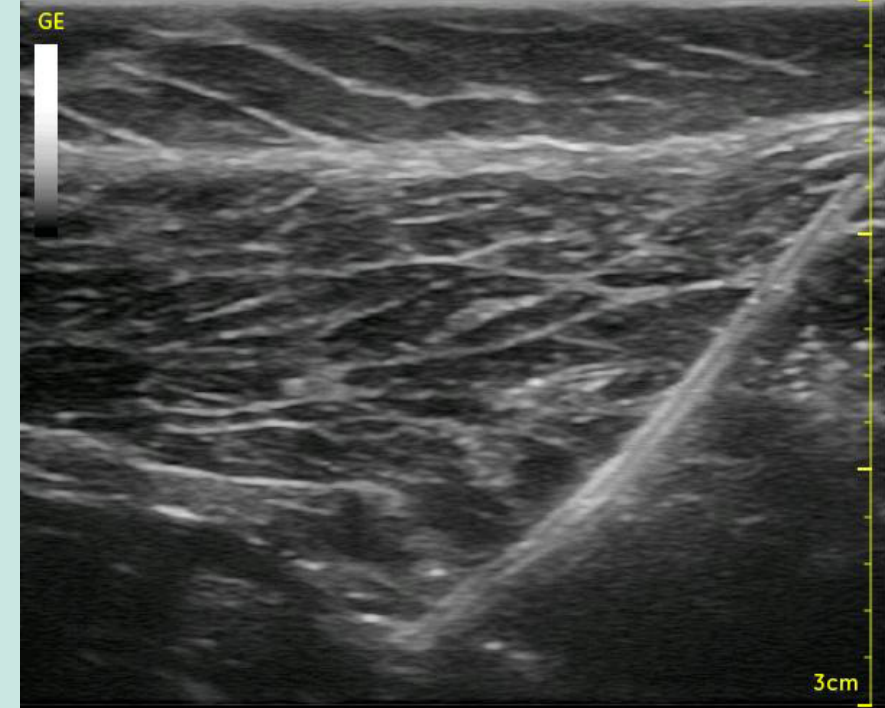
Transition from rigid body to flexible tip.



3

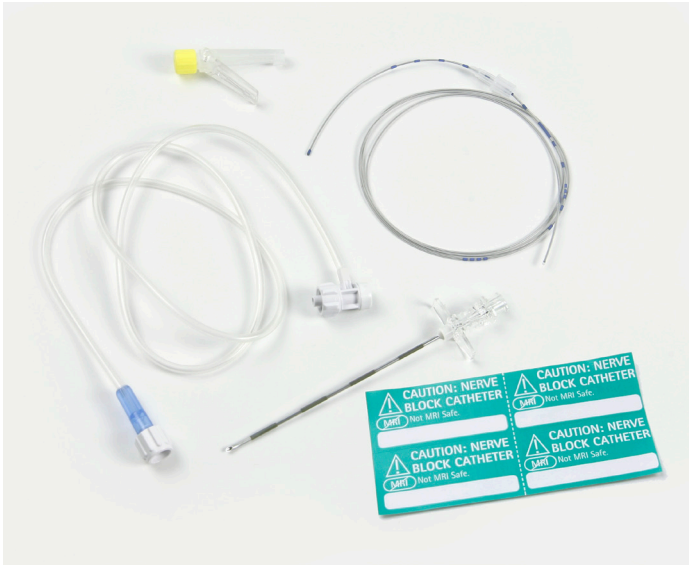
Improved Echogenicity

The Contiplex FX catheter is ultrasound visible throughout its entirety to make scanning and re-location identification easier post placement.



Contiplex FX catheter under ultrasound in pork shoulder model.

1. Fredrickson MJ, Ball CM, Dalgleish AJ. Multiorifice vs. End-Hole Perineural Catheters. *Regional Anesthesia and Pain Medicine*. 2011;36:470-475. Civ-Flex is a trademark of CIVCO. Chloraprep is a registered trademark of Carefusion 2200, Inc.



Ordering Information

Contiplex FX sets contain:

- 17G x 3 1/2" (90mm) Non-stimulating Tuohy needle
- 19G x 36" (900mm) Springwound catheter with Thread Assist Guide
- Sideport valve
- Catheter connector

Set Item #	Product Code	Catheter tip
331672	CNBFX350C	closed, multiport
331670	CNBFX3500	open, uniport



Contiplex FX trays include set items, plus:

- CIV-Flex™ transducer cover and ultrasound gel
- Tinted 3mL Chloraprep®
- Ultrasound drape with 6" x 4" fenestration
- Fixation
- Other procedural components

Tray Item #	Product Code	Catheter tip
332130	CNB350TKUFC	closed, multiport
332131	CNB350TKUFO	open, uniport

For more information please contact your local B. Braun representative, or call **800-227-2862**, or email us at ContiplexFX.us@bbraun.com

B | BRAUN
SHARING EXPERTISE